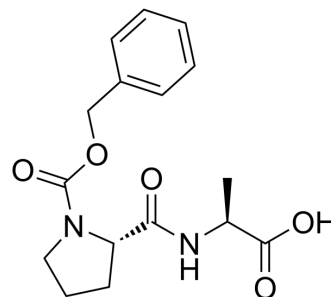


## Z-Pro-Ala

Cat. No.:	HY-P4611
CAS No.:	14030-00-3
Molecular Formula:	C <sub>16</sub> H <sub>20</sub> N <sub>2</sub> O <sub>5</sub>
Molecular Weight:	320.34
Sequence:	Pro-Ala
Sequence Shortening:	PA
Target:	Others
Pathway:	Others
Storage:	Please store the product under the recommended conditions in the Certificate of Analysis.



### BIOLOGICAL ACTIVITY

#### Description

Z-Pro-Ala is an acid carboxypeptidase. Z-Pro-Ala can be isolated from grains and leaves of wheat, *Triticum aestivum* L<sup>[1]</sup>.

### REFERENCES

[1]. Mikola L. Acid Carboxypeptidases in Grains and Leaves of Wheat, *Triticum aestivum* L. *Plant Physiol.* 1986 Jul;81(3):823-9.

**Caution: Product has not been fully validated for medical applications. For research use only.**

Tel: 609-228-6898

Fax: 609-228-5909

E-mail: [tech@MedChemExpress.com](mailto:tech@MedChemExpress.com)

Address: 1 Deer Park Dr, Suite Q, Monmouth Junction, NJ 08852, USA