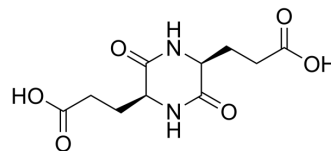


## Cyclo(-Glu-Glu)

Cat. No.:	HY-P4615
CAS No.:	16691-00-2
Molecular Formula:	C <sub>10</sub> H <sub>14</sub> N <sub>2</sub> O <sub>6</sub>
Molecular Weight:	258.23
Sequence:	Cyclo(-Glu-Glu)
Sequence Shortening:	Cyclo(-EE)
Target:	Others
Pathway:	Others
Storage:	Please store the product under the recommended conditions in the Certificate of Analysis.



### BIOLOGICAL ACTIVITY

#### Description

Cyclo(-Glu-Glu) is a cyclic peptide, a cyclic structure formed by linking two glutamic acid residues through a peptide bond<sup>[1]</sup>.

### REFERENCES

[1]. YOSINARI FUSAOKA, et al. Synthesis and interaction with metal ions of cyclic oligopeptides bearing carboxyl groups. *Chemical Biology*. Volume 34, Issue 2. August 1989. Pages 104-110

**Caution: Product has not been fully validated for medical applications. For research use only.**

Tel: 609-228-6898

Fax: 609-228-5909

E-mail: tech@MedChemExpress.com

Address: 1 Deer Park Dr, Suite Q, Monmouth Junction, NJ 08852, USA