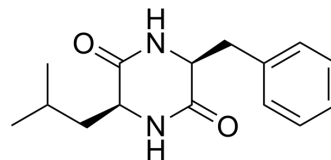


Cyclo(-Leu-Phe)

Cat. No.:	HY-P4617
CAS No.:	7280-77-5
Molecular Formula:	C ₁₅ H ₂₀ N ₂ O ₂
Molecular Weight:	260.33
Sequence:	Cyclo(-Leu-Phe)
Sequence Shortening:	Cyclo(-LF)
Target:	Others
Pathway:	Others
Storage:	Please store the product under the recommended conditions in the Certificate of Analysis.



BIOLOGICAL ACTIVITY

Description	Cyclo(-Leu-Phe) is a cyclic peptide composed of leucine and phenylalanine, forming a ring structure through peptide bonds [1].
-------------	--

REFERENCES

[1]. Peter Divanach, et al. Self-Assembly of Phenylalanine-Leucine, Leucine-Phenylalanine, and Cyclo(-leucine-phenylalanine) Dipeptides through Simulations and Experiments. *J. Phys. Chem. B* 2023, 127, 19, 4208–4219

Caution: Product has not been fully validated for medical applications. For research use only.

Tel: 609-228-6898

Fax: 609-228-5909

E-mail: tech@MedChemExpress.com

Address: 1 Deer Park Dr, Suite Q, Monmouth Junction, NJ 08852, USA