

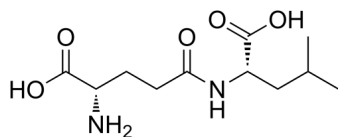
H-γ-Glu-Leu-OH

Cat. No.: HY-P4632
Batch No.: 287308
CAS No.: 2566-39-4
Molecular Formula: C₁₁H₂₀N₂O₅

ANALYTICAL DATA

Theoretical: C(-), H(-), N(-), Peptide Content(≥60.0%)
Result: C(45.49%), H(7.69%), N(9.58%), Peptide Content(89.00%)

Chemical Structure:



Caution: Product has not been fully validated for medical applications. For research use only.

Tel: 609-228-6898

Fax: 609-228-5909

E-mail: tech@MedChemExpress.com

Address: 1 Deer Park Dr, Suite Q, Monmouth Junction, NJ 08852, USA