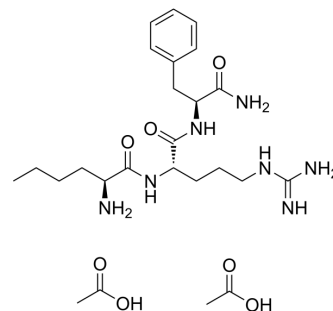


## Nle-Arg-Phe-NH<sub>2</sub> acetate

<b>Cat. No.:</b>	HY-P4671
<b>CAS No.:</b>	104809-29-2
<b>Molecular Formula:</b>	C <sub>25</sub> H <sub>43</sub> N <sub>7</sub> O <sub>7</sub>
<b>Molecular Weight:</b>	553.65
<b>Sequence:</b>	{Nle}-Arg-Phe-NH <sub>2</sub>
<b>Sequence Shortening:</b>	{Nle}-RF-NH <sub>2</sub>
<b>Target:</b>	Others
<b>Pathway:</b>	Others
<b>Storage:</b>	Please store the product under the recommended conditions in the Certificate of Analysis.



### BIOLOGICAL ACTIVITY

<b>Description</b>	Nle-Arg-Phe-NH <sub>2</sub> (acetate) is a tripeptide compound, usually in the form of acetate <sup>[1]</sup> .
--------------------	---

### REFERENCES

[1]. T A Day, et al. Structure-activity relationships of FMRFamide-related peptides contracting Schistosoma mansoni muscle. Peptides. 1997;18(7):917-21.

**Caution: Product has not been fully validated for medical applications. For research use only.**

Tel: 609-228-6898

Fax: 609-228-5909

E-mail: tech@MedChemExpress.com

Address: 1 Deer Park Dr, Suite Q, Monmouth Junction, NJ 08852, USA