

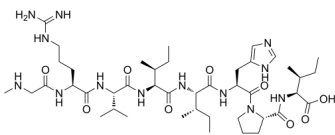
(Sar1,Ile4,8)-Angiotensin II

Cat. No.: HY-P4685
Batch No.: 265771
CAS No.: 185461-45-4
Molecular Formula: C₄₃H₇₅N₁₃O₉

ANALYTICAL DATA

Theoretical: C(-), H(-), N(-), Peptide Content(≥60.0%)
Result: C(50.58%), H(8.68%), N(17.23%), Peptide Content(86.90%)

Chemical Structure:



Caution: Product has not been fully validated for medical applications. For research use only.

Tel: 609-228-6898

Fax: 609-228-5909

E-mail: tech@MedChemExpress.com

Address: 1 Deer Park Dr, Suite Q, Monmouth Junction, NJ 08852, USA