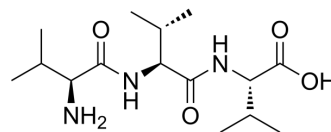


## Tri-valine

Cat. No.:	HY-P4698
CAS No.:	28130-13-4
Molecular Formula:	C <sub>15</sub> H <sub>29</sub> N <sub>3</sub> O <sub>4</sub>
Molecular Weight:	315.41
Sequence:	Val-Val-Val
Sequence Shortening:	VV
Target:	Others
Pathway:	Others
Storage:	Please store the product under the recommended conditions in the Certificate of Analysis.



### BIOLOGICAL ACTIVITY

#### Description

Tri-valine (NSC 35938) is a polypeptide that can be separated from Creatine kinase (HY-P2799), β-enolase, Triosephosphate isomerase (HY-P2931) and glyceraldehyde 3-phosphate dehydrogenase<sup>[1]</sup>.

### REFERENCES

[1]. Doherty MK, et al. Proteome dynamics in complex organisms: using stable isotopes to monitor individual protein turnover rates. *Proteomics*. 2005 Feb;5(2):522-33.

**Caution: Product has not been fully validated for medical applications. For research use only.**

Tel: 609-228-6898

Fax: 609-228-5909

E-mail: tech@MedChemExpress.com

Address: 1 Deer Park Dr, Suite Q, Monmouth Junction, NJ 08852, USA