

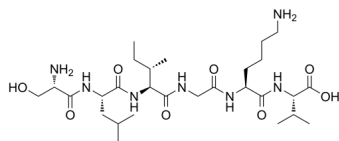
PAR-2 (1-6) (human)

Cat. No.: HY-P4803
Batch No.: 314869
CAS No.: 202933-49-1
Molecular Formula: C₂₈H₅₃N₇O₈

ANALYTICAL DATA

Theoretical: C(-), H(-), N(-), Peptide Content(≥60.0%)
Result: C(51.27%), H(8.626%), N(14.61%), Peptide Content(91.8%)

Chemical Structure:



Caution: Product has not been fully validated for medical applications. For research use only.

Tel: 609-228-6898

Fax: 609-228-5909

E-mail: tech@MedChemExpress.com

Address: 1 Deer Park Dr, Suite Q, Monmouth Junction, NJ 08852, USA