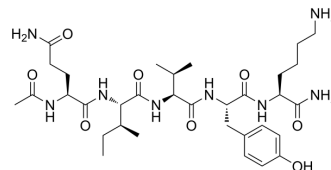


Acetyl-PHF5 amide

Cat. No.:	HY-P4822
CAS No.:	1190970-24-1
Molecular Formula:	C ₃₃ H ₅₄ N ₈ O ₈
Molecular Weight:	690.83
Sequence:	Ac-Gln-Ile-Val-Tyr-Lys-NH ₂
Sequence Shortening:	Ac-QIVYK-NH ₂
Target:	Tau Protein
Pathway:	Neuronal Signaling
Storage:	Please store the product under the recommended conditions in the Certificate of Analysis.



BIOLOGICAL ACTIVITY

Description	Acetyl-PHF5 amide is an amyloidogenic protein tau peptide. Acetyl-PHF5 amide can polymerization into filamentous structures ^[1] .
-------------	--

REFERENCES

[1]. Chaudhary N, et al. Morphology of self-assembled structures formed by short peptides from the amyloidogenic protein tau depends on the solvent in which the peptides are dissolved. J Pept Sci. 2009 Oct;15(10):675-84.

Caution: Product has not been fully validated for medical applications. For research use only.

Tel: 609-228-6898

Fax: 609-228-5909

E-mail: tech@MedChemExpress.com

Address: 1 Deer Park Dr, Suite Q, Monmouth Junction, NJ 08852, USA