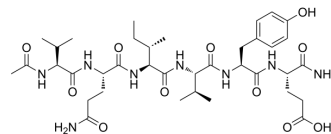


Acetyl-PHF6KE amide

Cat. No.:	HY-P4824
CAS No.:	1079892-79-7
Molecular Formula:	C ₃₇ H ₅₈ N ₈ O ₁₁
Molecular Weight:	790.9
Sequence:	Ac-Val-Gln-Ile-Val-Tyr-Glu-NH ₂
Sequence Shortening:	Ac-VQIVYE-NH ₂
Target:	Others
Pathway:	Others
Storage:	Please store the product under the recommended conditions in the Certificate of Analysis.



BIOLOGICAL ACTIVITY

Description

Acetyl-PHF6KE amide is a polypeptide that can be found by peptide screening. Peptide screening is a research tool that pools active peptides primarily by immunoassay. Peptide screening can be used for protein interaction, functional analysis, epitope screening, especially in the field of agent research and development^[1].

REFERENCES

[1]. Birnbaum S, et al. Peptide screening. *Current Opinion in Biotechnology*, 1992, 3(1): 49-54.

Caution: Product has not been fully validated for medical applications. For research use only.

Tel: 609-228-6898

Fax: 609-228-5909

E-mail: tech@MedChemExpress.com

Address: 1 Deer Park Dr, Suite Q, Monmouth Junction, NJ 08852, USA