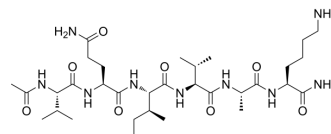


## Acetyl-PHF6YA amide

|                      |   |
|----------------------|---|
| Cat. No.:            | HY-P4828  |
| CAS No.:             | 885610-34-4   |
| Molecular Formula:   | C <sub>32</sub> H <sub>59</sub> N <sub>9</sub> O <sub>8</sub>                             |
| Molecular Weight:    | 697.87  |
| Sequence:            | Ac-Val-Gln-Ile-Val-Ala-Lys-NH <sub>2</sub>  |
| Sequence Shortening: | Ac-VQIVAK-NH <sub>2</sub>   |
| Target:              | Others  |
| Pathway:             | Others  |
| Storage:             | Please store the product under the recommended conditions in the Certificate of Analysis. |



### BIOLOGICAL ACTIVITY

#### Description

Acetyl-PHF6YA amide is a polypeptide that can be found by peptide screening. Peptide screening is a research tool that pools active peptides primarily by immunoassay. Peptide screening can be used for protein interaction, functional analysis, epitope screening, especially in the field of agent research and development<sup>[1]</sup>.

### REFERENCES

[1]. Birnbaum S, et al. Peptide screening. *Current Opinion in Biotechnology*, 1992, 3(1): 49-54.

**Caution: Product has not been fully validated for medical applications. For research use only.**

Tel: 609-228-6898

Fax: 609-228-5909

E-mail: tech@MedChemExpress.com

Address: 1 Deer Park Dr, Suite Q, Monmouth Junction, NJ 08852, USA