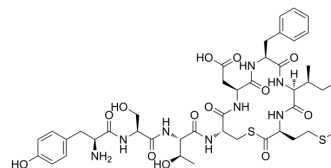


## Autoinducing Peptide I

**Cat. No.:** HY-P4909  
**CAS No.:** 200010-29-3  
**Molecular Formula:** C<sub>43</sub>H<sub>60</sub>N<sub>8</sub>O<sub>13</sub>S<sub>2</sub>  
**Molecular Weight:** 961.11  
**Sequence:** Tyr-Ser-Thr-Cys-Asp-Phe-Ile-Met (Sulfide bridge: Cys4-Met8)  
**Sequence Shortening:** YSTCDFIM (Sulfide bridge: Cys4-Met8)  
**Target:** Others  
**Pathway:** Others  
**Storage:** Sealed storage, away from moisture and light



Powder -80°C 2 years  
 -20°C 1 year

\* In solvent : -80°C, 6 months; -20°C, 1 month (sealed storage, away from moisture and light)

### SOLVENT & SOLUBILITY

#### In Vitro

DMSO : 100 mg/mL (104.05 mM; Need ultrasonic)

Concentration	Mass		
	1 mg	5 mg	10 mg
1 mM	1.0405 mL	5.2023 mL	10.4046 mL
5 mM	0.2081 mL	1.0405 mL	2.0809 mL
10 mM	0.1040 mL	0.5202 mL	1.0405 mL

Please refer to the solubility information to select the appropriate solvent.

### BIOLOGICAL ACTIVITY

#### Description

Autoinducing Peptide I is a cyclic octapeptide secreted by *Staphylococcus aureus* and can be used in vaccine research<sup>[1]</sup>.

### REFERENCES

[1]. Daly SM, et al. VLP-based vaccine induces immune control of *Staphylococcus aureus* virulence regulation. *Sci Rep.* 2017 Apr 4;7(1):637.

---

**Caution: Product has not been fully validated for medical applications. For research use only.**

Tel: 609-228-6898

Fax: 609-228-5909

E-mail: [tech@MedChemExpress.com](mailto:tech@MedChemExpress.com)

Address: 1 Deer Park Dr, Suite Q, Monmouth Junction, NJ 08852, USA