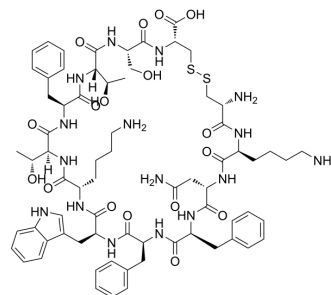


## Somatostatin-14 (3-14)

<b>Cat. No.:</b>	HY-P4916
<b>CAS No.:</b>	54518-51-3
<b>Molecular Formula:</b>	C <sub>71</sub> H <sub>96</sub> N <sub>16</sub> O <sub>17</sub> S <sub>2</sub>
<b>Molecular Weight:</b>	1509.75
<b>Sequence:</b>	Cys-Lys-Asn-Phe-Phe-Trp-Lys-Thr-Phe-Thr-Ser-Cys (Disulfide bridge:Cys1-Cys12)
<b>Sequence Shortening:</b>	CKNFFWKFTFTSC (Disulfide bridge:Cys1-Cys12)
<b>Target:</b>	Others
<b>Pathway:</b>	Others
<b>Storage:</b>	Sealed storage, away from moisture and light, under nitrogen



Powder    -80°C    2 years  
               -20°C    1 year

\* In solvent : -80°C, 6 months; -20°C, 1 month (sealed storage, away from moisture and light, under nitrogen)

### SOLVENT & SOLUBILITY

#### In Vitro

DMSO : 100 mg/mL (66.24 mM; Need ultrasonic)

Concentration	Solvent	Mass		
		1 mg	5 mg	10 mg
Preparing Stock Solutions	1 mM	0.6624 mL	3.3118 mL	6.6236 mL
	5 mM	0.1325 mL	0.6624 mL	1.3247 mL
	10 mM	0.0662 mL	0.3312 mL	0.6624 mL

Please refer to the solubility information to select the appropriate solvent.

### BIOLOGICAL ACTIVITY

#### Description

Somatostatin-14 (3-14) is a polypeptide that can be found by peptide screening. Peptide screening is a research tool that pools active peptides primarily by immunoassay. Peptide screening can be used for protein interaction, functional analysis, epitope screening, especially in the field of agent research and development<sup>[1]</sup>.

### REFERENCES

[1]. Birnbaum S, et al. Peptide screening. Current Opinion in Biotechnology, 1992, 3(1): 49-54.

---

**Caution: Product has not been fully validated for medical applications. For research use only.**

Tel: 609-228-6898

Fax: 609-228-5909

E-mail: [tech@MedChemExpress.com](mailto:tech@MedChemExpress.com)

Address: 1 Deer Park Dr, Suite Q, Monmouth Junction, NJ 08852, USA