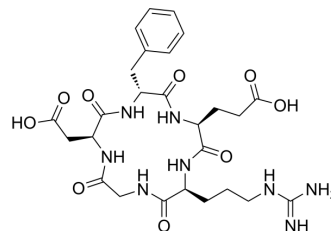


Cyclo(Arg-Gly-Asp-(D-Phe)-Glu)

Cat. No.:	HY-P5021
CAS No.:	756500-22-8
Molecular Formula:	C ₂₆ H ₃₆ N ₈ O ₉
Molecular Weight:	604.61
Sequence:	Cyclo(Arg-Gly-Asp-{d-Phe}-Glu)
Sequence Shortening:	Cyclo(RGD-{d-Phe}-E)
Target:	Biochemical Assay Reagents
Pathway:	Others
Storage:	Please store the product under the recommended conditions in the Certificate of Analysis.



BIOLOGICAL ACTIVITY

Description

Cyclo(Arg-Gly-Asp-(D-Phe)-Glu) (c(RGDfE)) is a cyclic RGD peptide that serves as a conjugated multifunctional nanodrug delivery system to target Gemcitabine to pancreatic cancer cells. Cyclo(Arg-Gly-Asp-(D-Phe)-Glu) can be used in cancer research^[1].

REFERENCES

[1]. Sun J , et al. A c(RGDfE) conjugated multi-functional nanomedicine delivery system for targeted pancreatic cancer therapy. J Mater Chem B. 2015 Feb 14;3(6):1049-1058.

Caution: Product has not been fully validated for medical applications. For research use only.

Tel: 609-228-6898

Fax: 609-228-5909

E-mail: tech@MedChemExpress.com

Address: 1 Deer Park Dr, Suite Q, Monmouth Junction, NJ 08852, USA