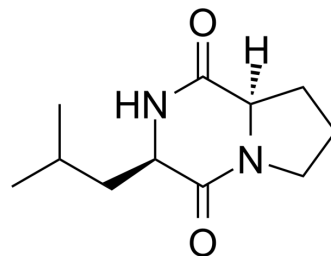


Cyclo(D-Leu-D-Pro)

Cat. No.:	HY-P5034
CAS No.:	274680-11-4
Molecular Formula:	C ₁₁ H ₁₈ N ₂ O ₂
Molecular Weight:	210.27
Sequence:	Cyclo([d-Leu]-[d-Pro])
Sequence Shortening:	Cyclo([d-Leu]-[d-Pro])
Target:	Others
Pathway:	Others
Storage:	Sealed storage, away from moisture
	Powder -80°C 2 years
	-20°C 1 year

* In solvent : -80°C, 6 months; -20°C, 1 month (sealed storage, away from moisture)



SOLVENT & SOLUBILITY

In Vitro

DMSO : 125 mg/mL (594.47 mM; Need ultrasonic)

	Solvent Concentration	Mass		
		1 mg	5 mg	10 mg
Preparing Stock Solutions	1 mM	4.7558 mL	23.7789 mL	47.5579 mL
	5 mM	0.9512 mL	4.7558 mL	9.5116 mL
	10 mM	0.4756 mL	2.3779 mL	4.7558 mL

Please refer to the solubility information to select the appropriate solvent.

BIOLOGICAL ACTIVITY

Description

Cyclo(D-Leu-D-Pro) is a polypeptide that can be found by peptide screening. Peptide screening is a research tool that pools active peptides primarily by immunoassay. Peptide screening can be used for protein interaction, functional analysis, epitope screening, especially in the field of agent research and development^[1].

REFERENCES

[1]. Birnbaum S, et al. Peptide screening. Current Opinion in Biotechnology, 1992, 3(1): 49-54.

Caution: Product has not been fully validated for medical applications. For research use only.

Tel: 609-228-6898

Fax: 609-228-5909

E-mail: tech@MedChemExpress.com

Address: 1 Deer Park Dr, Suite Q, Monmouth Junction, NJ 08852, USA