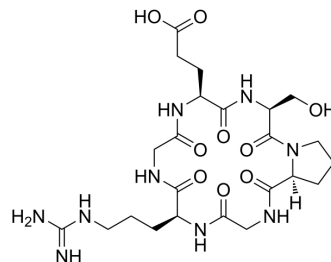


Cyclo(Gly-Arg-Gly-Glu-Ser-Pro)

Cat. No.:	HY-P5035
CAS No.:	2022956-43-8
Molecular Formula:	C ₂₃ H ₃₇ N ₉ O ₉
Molecular Weight:	583.59
Sequence:	Cyclo(Gly-Arg-Gly-Glu-Ser-Pro)
Sequence Shortening:	Cyclo(GRGESP)
Target:	Others
Pathway:	Others
Storage:	Please store the product under the recommended conditions in the Certificate of Analysis.



BIOLOGICAL ACTIVITY

Description

Cyclo(Gly-Arg-Gly-Glu-Ser-Pro) (c(GRGESP)) is a peptide that serves as a control peptide for the inhibitory peptide cyclo-GRGDSP^[1].

REFERENCES

[1]. Kumagai H, et al. Effect of cyclic RGD peptide on cell adhesion and tumor metastasis. *Biochem Biophys Res Commun*. 1991 May 31;177(1):74-82.

Caution: Product has not been fully validated for medical applications. For research use only.

Tel: 609-228-6898

Fax: 609-228-5909

E-mail: tech@MedChemExpress.com

Address: 1 Deer Park Dr, Suite Q, Monmouth Junction, NJ 08852, USA