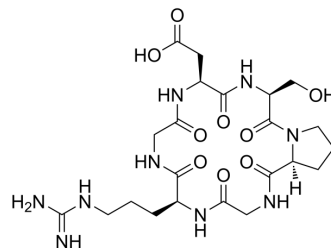


## Cyclo(Gly-Arg-Gly-Asp-Ser-Pro)

Cat. No.:	HY-P5038
CAS No.:	135432-37-0
Molecular Formula:	C <sub>22</sub> H <sub>35</sub> N <sub>9</sub> O <sub>9</sub>
Molecular Weight:	569.57
Sequence:	Cyclo(Gly-Arg-Gly-Asp-Ser-Pro)
Sequence Shortening:	Cyclo(GRGDSP)
Target:	Integrin
Pathway:	Cytoskeleton
Storage:	Please store the product under the recommended conditions in the Certificate of Analysis.



### BIOLOGICAL ACTIVITY

#### Description

Cyclo(Gly-Arg-Gly-Asp-Ser-Pro) (c(GRGDSP)) is an RGD-containing inhibitory peptide. Cyclo(Gly-Arg-Gly-Asp-Ser-Pro) is a synthetic  $\alpha 5 \beta 1$  integrin ligand that competitively inhibits the binding of invasin (Inv) to  $\alpha 5 \beta 1$  integrin expressed on Caco-2 cells<sup>[1]</sup>.

### REFERENCES

[1]. Kumagai H, et al. Effect of cyclic RGD peptide on cell adhesion and tumor metastasis. *Biochem Biophys Res Commun*. 1991 May 31;177(1):74-82.

**Caution: Product has not been fully validated for medical applications. For research use only.**

Tel: 609-228-6898

Fax: 609-228-5909

E-mail: tech@MedChemExpress.com

Address: 1 Deer Park Dr, Suite Q, Monmouth Junction, NJ 08852, USA