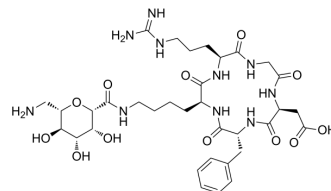


Galacto-RGD

Cat. No.:	HY-P5053
CAS No.:	922175-70-0
Molecular Formula:	C ₃₄ H ₅₂ N ₁₀ O ₁₂
Molecular Weight:	792.84
Sequence:	Cyclo(Arg-Gly-Asp-{d-Phe}-{Lys(SAA)})
Sequence Shortening:	Cyclo(RGD-{d-Phe}-{Lys(SAA)})
Target:	Integrin
Pathway:	Cytoskeleton
Storage:	Please store the product under the recommended conditions in the Certificate of Analysis.



BIOLOGICAL ACTIVITY

Description	Galacto-RGD is an RGD analogue that can be coupled with the radioactive isotope 18F and used as an integrin $\alpha_5\beta_3$ selective tracer ^[1] .
-------------	---

REFERENCES

[1]. Ambros J Beer, et al. Positron emission tomography using [18F]Galacto-RGD identifies the level of integrin alpha(v)beta3 expression in man. Clin Cancer Res. 2006 Jul 1;12(13):3942-9.

Caution: Product has not been fully validated for medical applications. For research use only.

Tel: 609-228-6898

Fax: 609-228-5909

E-mail: tech@MedChemExpress.com

Address: 1 Deer Park Dr, Suite Q, Monmouth Junction, NJ 08852, USA