

Arg-Glu(edans)-Ile-His-Pro-Phe-His-Pro-Phe-His-Leu-Val-Ile-His-Thr-Lys(dabcyl)-Arg TFA

Cat. No.: HY-P5123A

Molecular Formula: C₁₃₁H₁₈₀F₃N₃₇O₂₆S

Molecular Weight: 2778.12

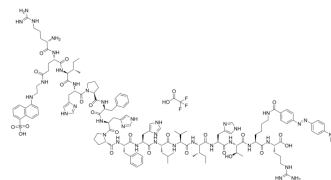
Sequence: Arg-{Glu(edans)-Ile-His-Pro-Phe-His-Pro-Phe-His-Leu-Val-Ile-His-Thr-{Lys(dabcyl)}-Arg

Sequence Shortening: R-{Glu(edans)-IHPFHPFHLVIHT-{Lys(dabcyl)}-R

Target: Others

Pathway: Others

Storage: Sealed storage, away from moisture and light, under nitrogen



Powder -80°C 2 years
 -20°C 1 year

* In solvent : -80°C, 6 months; -20°C, 1 month (sealed storage, away from moisture and light, under nitrogen)

SOLVENT & SOLUBILITY

In Vitro

H₂O : 50 mg/mL (18.00 mM; Need ultrasonic)

| Concentration | Mass | | |
|---------------|-----------|-----------|-----------|
| | 1 mg | 5 mg | 10 mg |
| 1 mM | 0.3600 mL | 1.7998 mL | 3.5996 mL |
| 5 mM | 0.0720 mL | 0.3600 mL | 0.7199 mL |
| 10 mM | 0.0360 mL | 0.1800 mL | 0.3600 mL |

Please refer to the solubility information to select the appropriate solvent.

BIOLOGICAL ACTIVITY

Description

Arg-Glu(edans)-Ile-His-Pro-Phe-His-Pro-Phe-His-Leu-Val-Ile-His-Thr-Lys(dabcyl)-Ar TFA is a fluorogenic renin substrate based on the N-terminal tetradecapeptide sequence of human angiotensinogen (hTDP)^[1].

REFERENCES

[1]. Katherine Paschalidou, et al. Highly sensitive intramolecularly quenched fluorogenic substrates for renin based on the combination of L-2-amino-3-(7-methoxy-4-coumaryl)propionic acid with 2,4-dinitrophenyl groups at various positions. *Biochem J.* 2004 Sep 15;382(Pt 3):1031-8.

Caution: Product has not been fully validated for medical applications. For research use only.

Tel: 609-228-6898

Fax: 609-228-5909

E-mail: tech@MedChemExpress.com

Address: 1 Deer Park Dr, Suite Q, Monmouth Junction, NJ 08852, USA