

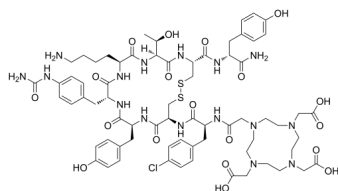
DOTA-LM3

Cat. No.: HY-P5126
Batch No.: 310629
CAS No.: 1192362-32-5
Molecular Formula: C₆₉H₉₃ClN₁₆O₁₉S₂

ANALYTICAL DATA

Theoretical: C(-), H(-), N(-), Peptide Content(≥60.0%)
Result: C(46.52%), H(6.28%), N(12.64%), Peptide Content(87.4%)

Chemical Structure:



Caution: Product has not been fully validated for medical applications. For research use only.

Tel: 609-228-6898

Fax: 609-228-5909

E-mail: tech@MedChemExpress.com

Address: 1 Deer Park Dr, Suite Q, Monmouth Junction, NJ 08852, USA