

## DOTA-LM3 (TFA)

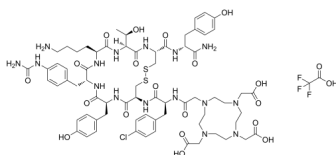
---

Cat. No.: HY-P5126A  
Batch No.: 271589  
Molecular Formula: C<sub>71</sub>H<sub>94</sub>ClF<sub>3</sub>N<sub>16</sub>O<sub>21</sub>S<sub>2</sub>

### ANALYTICAL DATA

Theoretical: C(-), H(-), N(-), Peptide Content(≥60.0%)  
Result: C(44.00%), H(5.44%), N(11.20%), Peptide Content(77.5%)

Chemical Structure:



**Caution: Product has not been fully validated for medical applications. For research use only.**

Tel: 609-228-6898

Fax: 609-228-5909

E-mail: [tech@MedChemExpress.com](mailto:tech@MedChemExpress.com)

Address: 1 Deer Park Dr, Suite Q, Monmouth Junction, NJ 08852, USA