

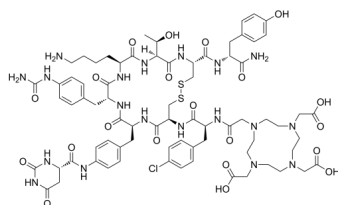
## DOTA-JR11

Cat. No.: HY-P5128  
Batch No.: 506212  
CAS No.: 1039726-31-2  
Molecular Formula: C<sub>74</sub>H<sub>98</sub>ClN<sub>19</sub>O<sub>21</sub>S<sub>2</sub>

### ANALYTICAL DATA

Theoretical: C(-), H(-), N(-), Peptide Content(≥60.0%)  
Result: C(48.18%), H(5.92%), N(14.24%), Peptide Content(90.44%)

Chemical Structure:



**Caution: Product has not been fully validated for medical applications. For research use only.**

Tel: 609-228-6898

Fax: 609-228-5909

E-mail: [tech@MedChemExpress.com](mailto:tech@MedChemExpress.com)

Address: 1 Deer Park Dr, Suite Q, Monmouth Junction, NJ 08852, USA