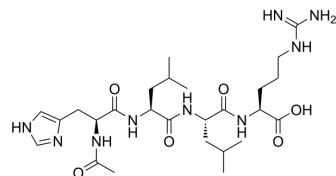


## Acetyl tetrapeptide-22

Cat. No.:	HY-P5236
CAS No.:	1295648-76-8
Molecular Formula:	C <sub>26</sub> H <sub>45</sub> N <sub>9</sub> O <sub>6</sub>
Molecular Weight:	579.69
Sequence:	Ac-His-Leu-Leu-Arg
Sequence Shortening:	Ac-HLLR
Target:	Others
Pathway:	Others
Storage:	Please store the product under the recommended conditions in the Certificate of Analysis.



### BIOLOGICAL ACTIVITY

#### Description

Acetyl tetrapeptide-22 is a bioactive peptide with repair skin effect and has been reported used as a cosmetic ingredient<sup>[1]</sup>.

### REFERENCES

[1]. Katie Rodan, et al. Cosmeceuticals and Cosmetic Practice. Bioactive Peptides. Chapter 14

**Caution: Product has not been fully validated for medical applications. For research use only.**

Tel: 609-228-6898

Fax: 609-228-5909

E-mail: tech@MedChemExpress.com

Address: 1 Deer Park Dr, Suite Q, Monmouth Junction, NJ 08852, USA