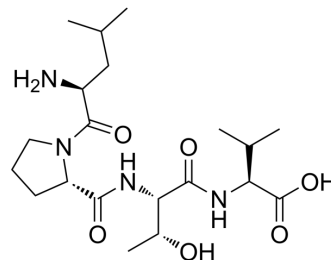


## Tetrapeptide-1

Cat. No.:	HY-P5248
CAS No.:	1632354-04-1
Molecular Formula:	C <sub>20</sub> H <sub>36</sub> N <sub>4</sub> O <sub>6</sub>
Molecular Weight:	428.52
Sequence:	Leu-Pro-Thr-Val
Sequence Shortening:	LPTV
Target:	Melanocortin Receptor
Pathway:	GPCR/G Protein; Neuronal Signaling
Storage:	Please store the product under the recommended conditions in the Certificate of Analysis.



### BIOLOGICAL ACTIVITY

Description	Tetrapeptide-1 is a bioactive peptide with antioxidant effect and has been reported used as a cosmetic ingredient <sup>[1]</sup> .
-------------	--

### REFERENCES

[1]. Oshimura, et al. Amino acids, peptides, and proteins. Cosmet. Sci. Technol. Theor. Princ. Appl (2017): 285-303.

**Caution: Product has not been fully validated for medical applications. For research use only.**

Tel: 609-228-6898

Fax: 609-228-5909

E-mail: tech@MedChemExpress.com

Address: 1 Deer Park Dr, Suite Q, Monmouth Junction, NJ 08852, USA