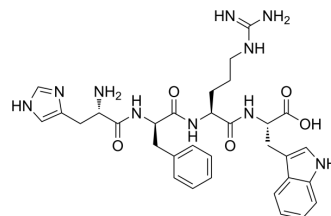


Tetrapeptide

Cat. No.:	HY-P5265
CAS No.:	31008-44-3
Molecular Formula:	C ₃₂ H ₄₀ N ₁₀ O ₅
Molecular Weight:	644.72
Sequence:	His-[d-Phe]-Arg-Trp
Sequence Shortening:	H-[d-Phe]-RW
Target:	DNA/RNA Synthesis
Pathway:	Cell Cycle/DNA Damage
Storage:	Please store the product under the recommended conditions in the Certificate of Analysis.



BIOLOGICAL ACTIVITY

Description

Tetrapeptide, an analogue of α -MSH, induces melanin synthesis. Tetrapeptide diminishes DNA damage by reducing the production of reactive oxidative species and enhancing repair of DNA photoproducts^[1].

REFERENCES

[1]. Varadraj Vasant Pai, et al. Topical peptides as cosmeceuticals. Indian J Dermatol Venereol Leprol. 2017 Jan-Feb;83(1):9-18.

Caution: Product has not been fully validated for medical applications. For research use only.

Tel: 609-228-6898

Fax: 609-228-5909

E-mail: tech@MedChemExpress.com

Address: 1 Deer Park Dr, Suite Q, Monmouth Junction, NJ 08852, USA