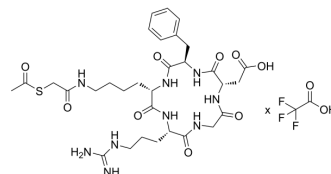


cRGDfK-thioacetyl ester TFA

Cat. No.:	HY-P5287A
Molecular Formula:	$C_{31}H_{45}N_9O_9S \cdot xC_2HF_3O_2$
Sequence:	Cyclo(Arg-Gly-Asp-{d-Phe}-Lys)-{Ac-SCH ₂ CO}
Sequence Shortening:	Cyclo(RGD-{d-Phe}-K)-{Ac-SCH ₂ CO}
Target:	Integrin
Pathway:	Cytoskeleton
Storage:	Please store the product under the recommended conditions in the Certificate of Analysis.



SOLVENT & SOLUBILITY

In Vitro	DMSO : ≥ 100 mg/mL * " \geq " means soluble, but saturation unknown.
-----------------	--

BIOLOGICAL ACTIVITY

Description	cRGDfK-thioacetyl ester TFA is a bioactive polypeptide molecule. cRGDfK peptide has a selective affinity for integrins. cRGDfK peptide can modify NIR fluorescent probes for cancer targeting imaging ^{[1][2]} .
--------------------	---

REFERENCES

- [1]. Toti US, et al. Interfacial activity assisted surface functionalization: a novel approach to incorporate maleimide functional groups and cRGD peptide on polymeric nanoparticles for targeted drug delivery. *Mol Pharm.* 2010 Aug 2;7(4):1108-17.
- [2]. Gamage RS, et al. Comparison of cRGDfK Peptide Probes with Appended Shielded Heptamethine Cyanine Dye (s775z) for Near Infrared Fluorescence Imaging of Cancer. *ACS Omega.* 2021 Oct 30;6(44):30130-30139.

Caution: Product has not been fully validated for medical applications. For research use only.

Tel: 609-228-6898

Fax: 609-228-5909

E-mail: tech@MedChemExpress.com

Address: 1 Deer Park Dr, Suite Q, Monmouth Junction, NJ 08852, USA