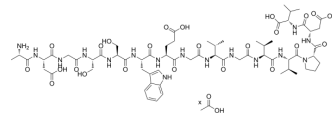


## IRBP derived peptide, R16 acetate

Cat. No.:	HY-P5397A
Molecular Formula:	$C_{64}H_{96}N_{16}O_{24} \cdot xC_2H_4O_2$
Sequence:	Ala-Asp-Gly-Ser-Ser-Trp-Glu-Gly-Val-Gly-Val-Val-Pro-Asp-Val
Sequence Shortening:	ADGSSWEGVGVVDPV
Target:	Others
Pathway:	Others
Storage:	Please store the product under the recommended conditions in the Certificate of Analysis.



### SOLVENT & SOLUBILITY

In Vitro	H <sub>2</sub> O : 7.69 mg/mL (Need ultrasonic)
----------	---

### BIOLOGICAL ACTIVITY

Description	IRBP derived peptide, R16 is a biological active peptide. (R16 is an IRBP (Interphotoreceptor retinoid binding protein) derived peptide. Photoreceptor cell protein is capable of inducing an experimental autoimmune uveitis (EAU) in susceptible animal strains.)
-------------	---

**Caution: Product has not been fully validated for medical applications. For research use only.**

Tel: 609-228-6898

Fax: 609-228-5909

E-mail: tech@MedChemExpress.com

Address: 1 Deer Park Dr, Suite Q, Monmouth Junction, NJ 08852, USA