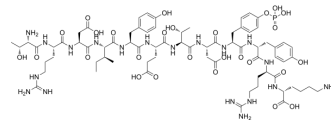


## Insulin receptor (1142-1153), pTyr1150

**Cat. No.:** HY-P5431  
**CAS No.:** 134177-41-6  
**Molecular Formula:** C<sub>72</sub>H<sub>108</sub>N<sub>19</sub>O<sub>27</sub>P  
**Molecular Weight:** 1702.71  
**Sequence:** Thr-Arg-Asp-Ile-Tyr-Glu-Thr-Asp-{pTyr}-Tyr-Arg-Lys  
**Sequence Shortening:** TRDIYETD-{pTyr}-YRK  
**Target:** Others  
**Pathway:** Others  
**Storage:** Sealed storage, away from moisture and light



Powder -80°C 2 years  
 -20°C 1 year

\* In solvent : -80°C, 6 months; -20°C, 1 month (sealed storage, away from moisture and light)

### SOLVENT & SOLUBILITY

#### In Vitro

DMSO : 1.96 mg/mL (1.15 mM; ultrasonic and adjust pH to 4 with HCl)

Concentration	Solvent	Mass		
		1 mg	5 mg	10 mg
Preparing Stock Solutions	1 mM	0.5873 mL	2.9365 mL	5.8730 mL
	5 mM	---	---	---
	10 mM	---	---	---

Please refer to the solubility information to select the appropriate solvent.

### BIOLOGICAL ACTIVITY

#### Description

Insulin receptor (1142-1153), pTyr1150 is a biological active peptide. (Peptide used as insulin receptor tyrosine kinase substrate.)

**Caution: Product has not been fully validated for medical applications. For research use only.**

Tel: 609-228-6898

Fax: 609-228-5909

E-mail: tech@MedChemExpress.com

Address: 1 Deer Park Dr, Suite Q, Monmouth Junction, NJ 08852, USA