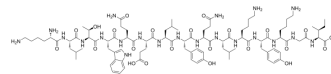


KLTWQELYQLKYKGI

Cat. No.:	HY-P5558
CAS No.:	917760-16-8
Molecular Formula:	C ₉₂ H ₁₄₃ N ₂₁ O ₂₃
Molecular Weight:	1911.25
Sequence:	Lys-Leu-Thr-Trp-Gln-Glu-Leu-Tyr-Gln-Leu-Lys-Tyr-Lys-Gly-Ile
Sequence Shortening:	KLTWQELYQLKYKGI
Target:	VEGFR
Pathway:	Protein Tyrosine Kinase/RTK
Storage:	Sealed storage, away from moisture
	Powder -80°C 2 years
	-20°C 1 year



* In solvent : -80°C, 6 months; -20°C, 1 month (sealed storage, away from moisture)

SOLVENT & SOLUBILITY

In Vitro

DMSO : 100 mg/mL (52.32 mM; Need ultrasonic)

Preparing Stock Solutions	Solvent Concentration	Mass	1 mg	5 mg	10 mg
	1 mM		0.5232 mL	2.6161 mL	5.2322 mL
	5 mM		0.1046 mL	0.5232 mL	1.0464 mL
	10 mM		0.0523 mL	0.2616 mL	0.5232 mL

Please refer to the solubility information to select the appropriate solvent.

BIOLOGICAL ACTIVITY

Description

KLTWQELYQLKYKGI (QK) is a VEGF mimicking peptide, binds to the VEGF receptors and competes with VEGF. KLTWQELYQLKYKGI is active in gastric ulcer healing in rodents when administered either orally or systemically. KLTWQELYQLKYKGI shows the ability to induce capillary formation and organization in vitro^[1].

REFERENCES

[1]. Gaetano Santulli, et al. In vivo properties of the proangiogenic peptide QK. J Transl Med. 2009 Jun 8:7:41.

Caution: Product has not been fully validated for medical applications. For research use only.

Tel: 609-228-6898

Fax: 609-228-5909

E-mail: tech@MedChemExpress.com

Address: 1 Deer Park Dr, Suite Q, Monmouth Junction, NJ 08852, USA