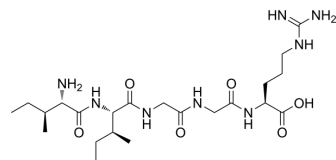


## Cathepsin G(1-5)

Cat. No.:	HY-P5617
CAS No.:	129633-72-3
Molecular Formula:	C <sub>22</sub> H <sub>42</sub> N <sub>8</sub> O <sub>6</sub>
Molecular Weight:	514.62
Sequence:	Ile-Ile-Gly-Gly-Arg
Sequence Shortening:	IIGGR
Target:	Bacterial
Pathway:	Anti-infection
Storage:	Please store the product under the recommended conditions in the Certificate of Analysis.



### BIOLOGICAL ACTIVITY

#### Description

Cathepsin G(1-5) is an antimicrobial peptide that can be found in the clostripain-digested cathepsin G mixture<sup>[1]</sup>.

### REFERENCES

[1]. Bangalore N, et, al. Identification of the primary antimicrobial domains in human neutrophil cathepsin G. J Biol Chem. 1990 Aug 15;265(23):13584-8.

**Caution: Product has not been fully validated for medical applications. For research use only.**

Tel: 609-228-6898

Fax: 609-228-5909

E-mail: tech@MedChemExpress.com

Address: 1 Deer Park Dr, Suite Q, Monmouth Junction, NJ 08852, USA