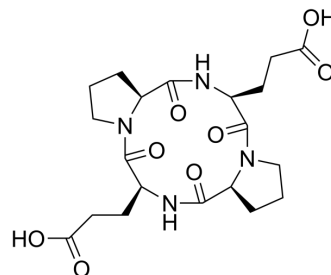


Cyclopetide 1

Cat. No.:	HY-P5698
CAS No.:	82081-23-0
Molecular Formula:	C ₂₀ H ₂₈ N ₄ O ₈
Molecular Weight:	452.46
Sequence:	Cyclo(Gly-Ser-Pro-Glu)
Sequence Shortening:	Cyclo(GSPE)
Target:	Bacterial
Pathway:	Anti-infection
Storage:	Please store the product under the recommended conditions in the Certificate of Analysis.



BIOLOGICAL ACTIVITY

Description	Cyclopetide 1 (Compound 1) is an antimicrobial peptide with moderate activity against <i>B. subtilis</i> , with a MIC of 25 µg/mL ^[1] .
-------------	--

REFERENCES

[1]. Mitova M, Popov S, De Rosa S. Cyclic peptides from a *Ruegeria* strain of bacteria associated with the sponge *Suberites domuncula*. *J Nat Prod*. 2004 Jul;67(7):1178-81.

Caution: Product has not been fully validated for medical applications. For research use only.

Tel: 609-228-6898

Fax: 609-228-5909

E-mail: tech@MedChemExpress.com

Address: 1 Deer Park Dr, Suite Q, Monmouth Junction, NJ 08852, USA