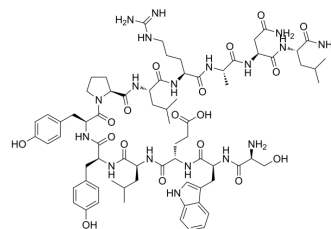


SWELYPLRANL-NH2

Cat. No.:	HY-P5755
Molecular Formula:	C ₇₃ H ₁₀₆ N ₁₈ O ₁₈
Molecular Weight:	1523.73
Sequence:	Ser-Trp-Glu-Leu-Tyr-Tyr-Pro-Leu-Arg-Ala-Asn-Leu-NH2
Sequence Shortening:	SWELYPLRANL-NH2
Target:	Others
Pathway:	Others
Storage:	Sealed storage, away from moisture and light
	Powder -80°C 2 years
	-20°C 1 year



* In solvent : -80°C, 6 months; -20°C, 1 month (sealed storage, away from moisture and light)

SOLVENT & SOLUBILITY

In Vitro

DMSO : 100 mg/mL (65.63 mM; Need ultrasonic)

Preparing Stock Solutions	Solvent Concentration	Mass	1 mg	5 mg	10 mg
	1 mM		0.6563 mL	3.2814 mL	6.5628 mL
	5 mM		0.1313 mL	0.6563 mL	1.3126 mL
	10 mM		0.0656 mL	0.3281 mL	0.6563 mL

Please refer to the solubility information to select the appropriate solvent.

BIOLOGICAL ACTIVITY

Description

SWELYPLRANL-NH2 is an E-cadherin and N-cadherin antagonist. SWELYPLRANL-NH2 inhibits phage clone binding to E- or N-cad/Fc chimeric protein (IC₅₀: 0.7 and 0.09 μM respectively). SWELYPLRANL-NH2 inhibits cell aggregation. SWELYPLRANL-NH2 can be used to promote drug delivery through epithelial and endothelial permeability barriers^[1].

IC₅₀ & Target

E-cadherin, N-cadherin^[1]

REFERENCES

[1]. Devery E, et al. Identification of a novel dual E- and N-cadherin antagonist. Peptides. 2009 Aug;30(8):1539-47.

Caution: Product has not been fully validated for medical applications. For research use only.

Tel: 609-228-6898

Fax: 609-228-5909

E-mail: tech@MedChemExpress.com

Address: 1 Deer Park Dr, Suite Q, Monmouth Junction, NJ 08852, USA