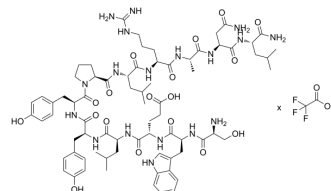


SWELYPLRANL-NH2 TFA

Cat. No.:	HY-P5755A
Molecular Formula:	$C_{73}H_{106}N_{18}O_{18} \cdot xC_2HF_3O_2$
Sequence:	Ser-Trp-Glu-Leu-Tyr-Tyr-Pro-Leu-Arg-Ala-Asn-Leu-NH2
Sequence Shortening:	SWELYPLRANL-NH2
Target:	Others
Pathway:	Others
Storage:	Please store the product under the recommended conditions in the Certificate of Analysis.



BIOLOGICAL ACTIVITY

Description

SWELYPLRANL-NH2 TFA is an E-cadherin and N-cadherin antagonist. SWELYPLRANL-NH2 TFA inhibits phage clone binding to E- or N-cad/Fc chimeric protein (IC₅₀: 0.7 and 0.09 μM respectively). SWELYPLRANL-NH2 TFA inhibits cell aggregation. SWELYPLRANL-NH2 can be used to promote drug delivery through epithelial and endothelial permeability barriers^[1].

REFERENCES

[1]. Devery E, et al. Identification of a novel dual E- and N-cadherin antagonist. Peptides. 2009 Aug;30(8):1539-47.

Caution: Product has not been fully validated for medical applications. For research use only.

Tel: 609-228-6898

Fax: 609-228-5909

E-mail: tech@MedChemExpress.com

Address: 1 Deer Park Dr, Suite Q, Monmouth Junction, NJ 08852, USA