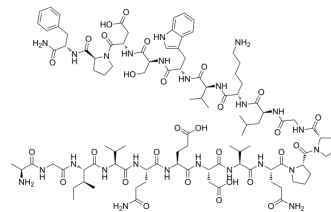


## Phoenixin-20

<b>Cat. No.:</b>	HY-P5763
<b>CAS No.:</b>	1415039-77-8
<b>Molecular Formula:</b>	C <sub>101</sub> H <sub>153</sub> N <sub>25</sub> O <sub>29</sub>
<b>Molecular Weight:</b>	2181.45
<b>Sequence:</b>	Ala-Gly-Ile-Val-Gln-Glu-Asp-Val-Gln-Pro-Pro-Gly-Leu-Lys-Val-Trp-Ser-Asp-Pro-Phe-NH 2
<b>Sequence Shortening:</b>	AGIVQEDVQPPGLKVVSDPF-NH2
<b>Target:</b>	Epigenetic Reader Domain; PGC-1α
<b>Pathway:</b>	Epigenetics; Metabolic Enzyme/Protease
<b>Storage:</b>	Sealed storage, away from moisture and light Powder    -80°C    2 years -20°C    1 year
	* In solvent : -80°C, 6 months; -20°C, 1 month (sealed storage, away from moisture and light)



### SOLVENT & SOLUBILITY

#### In Vitro

DMSO : 50 mg/mL (22.92 mM; Need ultrasonic)

Concentration	Solvent	Mass		
		1 mg	5 mg	10 mg
Preparing Stock Solutions	1 mM	0.4584 mL	2.2921 mL	4.5841 mL
	5 mM	0.0917 mL	0.4584 mL	0.9168 mL
	10 mM	0.0458 mL	0.2292 mL	0.4584 mL

Please refer to the solubility information to select the appropriate solvent.

### BIOLOGICAL ACTIVITY

#### Description

Phoenixin-20 (PNX-20) is a bioactive peptide with hormone-like actions in vertebrates, and can stimulates hypothalamo-pituitary-gonadal hormones and regulate reproductive processes in mammals. Phoenixin-20 promotes neuronal mitochondrial biogenesis via CREB-PGC-1α pathway. Phoenixin-20 has anxiolytic effect<sup>[1][2][3]</sup>.

### REFERENCES

- [1]. Yang Y, et al. Phoenixin 20 promotes neuronal mitochondrial biogenesis via CREB-PGC-1α pathway. J Mol Histol. 2020;51(2):173-181.
- [2]. Jiang JH, et al. Effects of Phoenixin-14 on anxiolytic-like behavior in mice. Behav Brain Res. 2015;286:39-48.

---

[3]. Rajeswari JJ, et al. Phoenixin-20 Stimulates mRNAs Encoding Hypothalamo-Pituitary-Gonadal Hormones, is Pro-Vitellogenic, and Promotes Oocyte Maturation in Zebrafish. *Sci Rep.* 2020;10(1):6264.

---

**Caution: Product has not been fully validated for medical applications. For research use only.**

Tel: 609-228-6898

Fax: 609-228-5909

E-mail: [tech@MedChemExpress.com](mailto:tech@MedChemExpress.com)

Address: 1 Deer Park Dr, Suite Q, Monmouth Junction, NJ 08852, USA