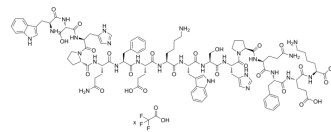


WSHPQFEKWSHPQFEK TFA

Cat. No.:	HY-P5768A
Molecular Formula:	$C_{100}H_{132}N_{26}O_{25} \cdot xC_2HF_3O_2$
Sequence:	Trp-Ser-His-Pro-Gln-Phe-Glu-Lys-Trp-Ser-His-Pro-Gln-Phe-Glu-Lys
Sequence Shortening:	WSHPQFEKWSHPQFEK
Target:	Biochemical Assay Reagents
Pathway:	Others
Storage:	Please store the product under the recommended conditions in the Certificate of Analysis.



BIOLOGICAL ACTIVITY

Description

WSHPQFEKWSHPQFEK TFA is an oligopeptide that can link proteins and dsDNA molecules in an efficient, rapid and specific manner. WSHPQFEKWSHPQFEK TFA can be used to construct DNA-protein hybrids^[1].

REFERENCES

[1]. Moayed F, et al. A polypeptide-DNA hybrid with selective linking capability applied to single molecule nano-mechanical measurements using optical tweezers. PLoS One. 2013;8(1):e54440.

Caution: Product has not been fully validated for medical applications. For research use only.

Tel: 609-228-6898

Fax: 609-228-5909

E-mail: tech@MedChemExpress.com

Address: 1 Deer Park Dr, Suite Q, Monmouth Junction, NJ 08852, USA