

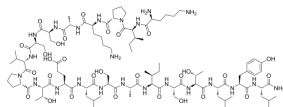
BMP2-derived peptide

Cat. No.: HY-P5832
CAS No.: 836606-84-9
Batch No.: 340430
Chemical Name: L-Leucinamide, L-lysyl-L-isoleucyl-L-prolyl-L-lysyl-L-alanyl-L-seryl-L-seryl-L-valyl-L-prolyl-L-threonyl-L- α -glutamyl-L-leucyl-L-seryl-L-alanyl-L-isoleucyl-L-seryl-L-threonyl-L-leucyl-L-tyrosyl-

PHYSICAL AND CHEMICAL PROPERTIES

Molecular Formula: $C_{97}H_{165}N_{23}O_{29}$
Molecular Weight: 2117.48
Storage: Sealed storage, away from moisture and light
Powder -80°C 2 years
 -20°C 1 year
* In solvent : -80°C, 6 months; -20°C, 1 month (sealed storage, away from moisture and light)

Chemical Structure:



ANALYTICAL DATA

Appearance: White to off-white (Solid)
LCMS: Consistent with structure
Purity (LCMS): 98.48%
Conclusion: The product has been tested and complies with the given specifications.

Caution: Product has not been fully validated for medical applications. For research use only.

Tel: 609-228-6898

Fax: 609-228-5909

E-mail: tech@MedChemExpress.com

Address: 1 Deer Park Dr, Suite Q, Monmouth Junction, NJ 08852, USA