

BMP2-derived peptide

Cat. No.: HY-P5832

CAS No.: 836606-84-9

Molecular Formula: $C_{97}H_{165}N_{23}O_{29}$

Molecular Weight: 2117.48

Sequence: Lys-Ile-Pro-Lys-Ala-Ser-Ser-Val-Pro-Thr-Glu-Leu-Ser-Ala-Ile-Ser-Thr-Leu-Tyr-Leu-NH₂

Sequence Shortening: KIPKASSVPTELSAISTLYL-NH₂

Target: Others

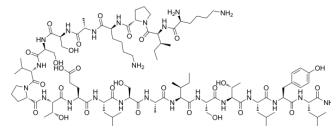
Pathway: Others

Storage: Sealed storage, away from moisture and light

Powder -80°C 2 years

-20°C 1 year

* In solvent : -80°C, 6 months; -20°C, 1 month (sealed storage, away from moisture and light)



SOLVENT & SOLUBILITY

In Vitro

DMSO : 100 mg/mL (47.23 mM; Need ultrasonic)

Concentration	Mass		
	1 mg	5 mg	10 mg
1 mM	0.4723 mL	2.3613 mL	4.7226 mL
5 mM	0.0945 mL	0.4723 mL	0.9445 mL
10 mM	0.0472 mL	0.2361 mL	0.4723 mL

Please refer to the solubility information to select the appropriate solvent.

BIOLOGICAL ACTIVITY

Description

BMP2-derived peptide is a functional motif from positions 73 to 92 of the amino acid sequence of BMP-2. BMP2-derived peptide promotes osteogenic differentiation of bone marrow stromal cells (BMSCs) and enhances bone regeneration^[1].

REFERENCES

[1]. Liu Q, et al. Advances in the application of bone morphogenetic proteins and their derived peptides in bone defect repair. Composites Part B: Engineering, 2023, 262: 110805.

Caution: Product has not been fully validated for medical applications. For research use only.

Tel: 609-228-6898

Fax: 609-228-5909

E-mail: tech@MedChemExpress.com

Address: 1 Deer Park Dr, Suite Q, Monmouth Junction, NJ 08852, USA