

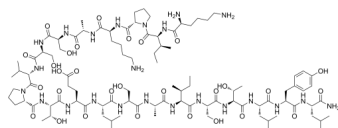
BMP2-derived peptide

Cat. No.: HY-P5832
Batch No.: 340430
CAS No.: 836606-84-9
Molecular Formula: C₉₇H₁₆₅N₂₃O₂₉

ANALYTICAL DATA

Theoretical: C(-), H(-), N(-), Peptide Content(≥60.0%)
Result: C(48.81%), H(5.73%), N(11.96%), Peptide Content(78.68%)

Chemical Structure:



Caution: Product has not been fully validated for medical applications. For research use only.

Tel: 609-228-6898

Fax: 609-228-5909

E-mail: tech@MedChemExpress.com

Address: 1 Deer Park Dr, Suite Q, Monmouth Junction, NJ 08852, USA