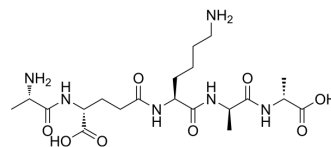


Ala-D-γ-Glu-Lys-D-Ala-D-Ala

Cat. No.:	HY-P5919
CAS No.:	2614-55-3
Molecular Formula:	C ₂₀ H ₃₆ N ₆ O ₈
Molecular Weight:	488.54
Sequence:	Ala-{d-γGlu}-Lys-{d-Ala}-{d-Ala}
Sequence Shortening:	A-{d-γGlu}-K-{d-Ala}-{d-Ala}
Target:	Others
Pathway:	Others
Storage:	Sealed storage, away from moisture
	Powder -80°C 2 years
	-20°C 1 year



* In solvent : -80°C, 6 months; -20°C, 1 month (sealed storage, away from moisture)

SOLVENT & SOLUBILITY

In Vitro

H₂O : ≥ 100 mg/mL (204.69 mM)

* "≥" means soluble, but saturation unknown.

	Solvent Concentration	Mass		
		1 mg	5 mg	10 mg
Preparing Stock Solutions	1 mM	2.0469 mL	10.2346 mL	20.4692 mL
	5 mM	0.4094 mL	2.0469 mL	4.0938 mL
	10 mM	0.2047 mL	1.0235 mL	2.0469 mL

Please refer to the solubility information to select the appropriate solvent.

BIOLOGICAL ACTIVITY

Description

Ala-D-γ-Glu-Lys-D-Ala-D-Ala is the pentapeptide tail of the peptidoglycan precursor UDPMurNAc-l-Ala-γ-d-Glu-l-Lys(Gly)(5)-d-Ala-d-Ala^[1].

REFERENCES

[1]. Tossavainen H, et al Structural and Functional Insights Into Lysostaphin-Substrate Interaction. Front Mol Biosci. 2018;5:60. Published 2018 Jul 3.

Caution: Product has not been fully validated for medical applications. For research use only.

Tel: 609-228-6898

Fax: 609-228-5909

E-mail: tech@MedChemExpress.com

Address: 1 Deer Park Dr, Suite Q, Monmouth Junction, NJ 08852, USA