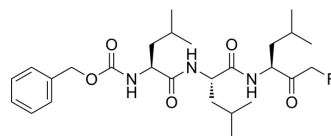


Z-Leu-Leu-Leu-fluoromethyl ketone

Cat. No.:	HY-P5975
CAS No.:	371167-61-2
Molecular Formula:	C ₂₇ H ₄₂ FN ₃ O ₅
Molecular Weight:	507.64
Sequence:	Z-Leu-Leu-Leu-FMK
Sequence Shortening:	Z-LLL-FMK
Target:	Cathepsin; SARS-CoV
Pathway:	Metabolic Enzyme/Protease; Anti-infection
Storage:	Please store the product under the recommended conditions in the Certificate of Analysis.



BIOLOGICAL ACTIVITY

Description	Z-Leu-Leu-Leu-fluoromethyl ketone (Z-LLL-FMK) is a cysteine protease inhibitor. Z-Leu-Leu-Leu-fluoromethyl ketone inhibits SARS infection. Z-Leu-Leu-Leu-fluoromethyl ketone also protects mice against a <i>T. crassiceps</i> challenge ^{[1][2]} .
IC ₅₀ & Target	cysteine protease ^[1] .

REFERENCES

- [1]. Simmons G, et al. Inhibitors of cathepsin L prevent severe acute respiratory syndrome coronavirus entry. *Proc Natl Acad Sci U S A*. 2005 Aug 16;102(33):11876-81.
- [2]. Baig S, et al. Cysteine proteinase inhibitors in murine cysticercosis. *Antimicrob Agents Chemother*. 2006 Aug;50(8):2886-8.

Caution: Product has not been fully validated for medical applications. For research use only.

Tel: 609-228-6898

Fax: 609-228-5909

E-mail: tech@MedChemExpress.com

Address: 1 Deer Park Dr, Suite Q, Monmouth Junction, NJ 08852, USA