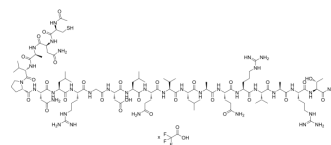


## Cys- $\alpha\beta$ 6-BP TFA

<b>Cat. No.:</b>	HY-P6009A
<b>Molecular Formula:</b>	$C_{98}H_{171}N_{35}O_{29}S.xC_2HF_3O_2$
<b>Sequence:</b>	Ac-Cys-Asn-Ala-Val-Pro-Asn-Leu-Arg-Gly-Asp-Leu-Gln-Val-Leu-Ala-Gln-Arg-Val-Ala-Arg-Thr-NH <sub>2</sub> (TFA salt)
<b>Sequence Shortening:</b>	Ac-CNAVPNLRGDLQVLAQRVART-NH <sub>2</sub> (TFA salt)
<b>Target:</b>	Integrin
<b>Pathway:</b>	Cytoskeleton
<b>Storage:</b>	Sealed storage, away from moisture and light Powder    -80°C    2 years -20°C    1 year * In solvent : -80°C, 6 months; -20°C, 1 month (sealed storage, away from moisture and light)



### SOLVENT & SOLUBILITY

<b>In Vitro</b>	H <sub>2</sub> O : $\geq$ 100 mg/mL * " $\geq$ " means soluble, but saturation unknown.
-----------------	--

### BIOLOGICAL ACTIVITY

<b>Description</b>	Cys- $\alpha\beta$ 6-BP TFA is a cysteine-terminated $\alpha\beta$ 6 binding peptide <sup>[1]</sup> .
--------------------	---

### REFERENCES

[1]. Hausner SH, et al. The Effects of an Albumin Binding Moiety on the Targeting and Pharmacokinetics of an Integrin  $\alpha\beta$ 6-Selective Peptide Labeled with Aluminum [18F]Fluoride. *Mol Imaging Biol.* 2020 Dec;22(6):1543-1552.

**Caution: Product has not been fully validated for medical applications. For research use only.**

Tel: 609-228-6898

Fax: 609-228-5909

E-mail: tech@MedChemExpress.com

Address: 1 Deer Park Dr, Suite Q, Monmouth Junction, NJ 08852, USA