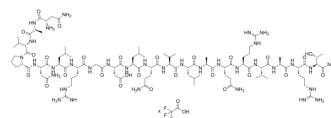


## $\alpha$ v $\beta$ 6-BP TFA

Cat. No.:	HY-P6010A
Molecular Formula:	$C_{93}H_{164}N_{34}O_{27} \cdot xC_2HF_3O_2$
Sequence:	Asn-Ala-Val-Pro-Asn-Leu-Arg-Gly-Asp-Leu-Gln-Val-Leu-Ala-Gln-Arg-Val-Ala-Arg-Thr-NH <sub>2</sub> (TFA salt)
Sequence Shortening:	NAVPNLRGDLQVLAQRVART-NH <sub>2</sub> (TFA salt)
Target:	Integrin
Pathway:	Cytoskeleton
Storage:	Sealed storage, away from moisture and light Powder    -80°C    2 years -20°C    1 year * In solvent : -80°C, 6 months; -20°C, 1 month (sealed storage, away from moisture and light)



### SOLVENT & SOLUBILITY

In Vitro	H <sub>2</sub> O : $\geq 50$ mg/mL * " $\geq$ " means soluble, but saturation unknown.
----------	---

### BIOLOGICAL ACTIVITY

Description	$\alpha$ v $\beta$ 6-BP TFA is a selective $\alpha$ v $\beta$ 6 binding peptide, and can be used for research of molecular imaging <sup>[1]</sup> .
IC <sub>50</sub> & Target	$\alpha$ v $\beta$ 6 <sup>[1]</sup> .

### REFERENCES

[1]. Hausner SH, et al. The Effects of an Albumin Binding Moiety on the Targeting and Pharmacokinetics of an Integrin  $\alpha$ v $\beta$ 6-Selective Peptide Labeled with Aluminum [18F]Fluoride. Mol Imaging Biol. 2020 Dec;22(6):1543-1552.

**Caution: Product has not been fully validated for medical applications. For research use only.**

Tel: 609-228-6898

Fax: 609-228-5909

E-mail: tech@MedChemExpress.com

Address: 1 Deer Park Dr, Suite Q, Monmouth Junction, NJ 08852, USA