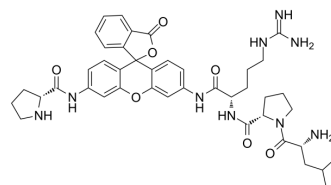


## D-Leu-Pro-Arg-Rh110-D-Pro

Cat. No.:	HY-P6023
Molecular Formula:	C <sub>42</sub> H <sub>51</sub> N <sub>9</sub> O <sub>7</sub>
Molecular Weight:	793.91
Sequence:	{d-Leu}-Pro-Arg-{Rh110}-{d-Pro}
Sequence Shortening:	{d-Leu}-PR-{Rh110}-{d-Pro}
Target:	Factor Xa
Pathway:	Metabolic Enzyme/Protease
Storage:	Please store the product under the recommended conditions in the Certificate of Analysis.



### BIOLOGICAL ACTIVITY

#### Description

D-Leu-Pro-Arg-Rh110-D-Pro is a substrate for Factor Xa I (FXIa) with binding affinity. D-Leu-Pro-Arg-Rh110-D-Pro consists of Rhodamine 110 (HY-D0817) linked to a peptide chain through a cleavable bond. Cleavable bond cleavage enhances fluorophore intensity. D-Leu-Pro-Arg-Rh110-D-Pro can be used to detect FXIa activity<sup>[1]</sup>.

### REFERENCES

[1]. Lorthiois E, et al. Structure-Based Design and Preclinical Characterization of Selective and Orally Bioavailable Factor XIa Inhibitors: Demonstrating the Power of an Integrated S1 Protease Family Approach. *J Med Chem.* 2020 Aug 13;63(15):8088-8113.

**Caution: Product has not been fully validated for medical applications. For research use only.**

Tel: 609-228-6898

Fax: 609-228-5909

E-mail: tech@MedChemExpress.com

Address: 1 Deer Park Dr, Suite Q, Monmouth Junction, NJ 08852, USA