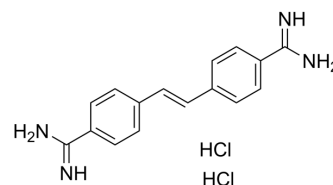


Stilbamidine dihydrochloride

Cat. No.:	HY-U00007A
CAS No.:	6935-63-3
Molecular Formula:	C ₁₆ H ₁₈ Cl ₂ N ₄
Molecular Weight:	337.25
Target:	Fungal
Pathway:	Anti-infection
Storage:	4°C, sealed storage, away from moisture * In solvent : -80°C, 6 months; -20°C, 1 month (sealed storage, away from moisture)



BIOLOGICAL ACTIVITY

Description	Stilbamidine dihydrochloride is a diamidine compound derived from Stilbene and used chiefly in the form of its crystalline isethionate salt in treating various fungal infections.
In Vitro	The high-affinity pentamidine transporter (HAPT1) is inhibited by Propamidine but displays only low affinity to Stilbamidine dihydrochloride. adenosine-sensitive pentamidine transporter (ASPT1), in contrast, is strongly inhibited by Stilbamidine dihydrochloride, and Propamidine. [³ H]pentamidine uptake is determined in the presence of various concentrations of adenosine (IC ₅₀ =1.2 μM) or melarsen oxide (IC ₅₀ =0.7 μM), as well as in the presence of 250 μM adenosine and increasing concentrations of hypoxanthine, Propamidine (IC ₅₀ =6.1 μM) and Stilbamidine dihydrochloride (IC ₅₀ =110 μM) ^[1] . The two diamidine compounds, Stilbamidine dihydrochloride and Pentamidine are used to treat in multiple myeloma, a disease in which increase of the globulin content of the serum is of frequent occurrence ^[2] . MCE has not independently confirmed the accuracy of these methods. They are for reference only.

REFERENCES

- [1]. De Koning HP. Uptake of pentamidine in Trypanosoma brucei brucei is mediated by three distinct transporters: implications for cross-resistance with arsenicals. Mol Pharmacol. 2001 Mar;59(3):586-92.
- [2]. BREWER AE.et al. Multiple myeloma treated with stilbamidine and pentamidine. Br Med J. 1948 Dec 4;2(4587):978-82.

Caution: Product has not been fully validated for medical applications. For research use only.

Tel: 609-228-6898 Fax: 609-228-5909 E-mail: tech@MedChemExpress.com

Address: 1 Deer Park Dr, Suite Q, Monmouth Junction, NJ 08852, USA