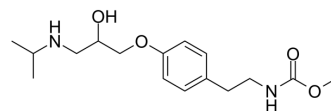


Pamatolol

Cat. No.:	HY-U00019
CAS No.:	59110-35-9
Molecular Formula:	C ₁₆ H ₂₆ N ₂ O ₄
Molecular Weight:	310.39
Target:	Adrenergic Receptor
Pathway:	GPCR/G Protein; Neuronal Signaling
Storage:	Please store the product under the recommended conditions in the Certificate of Analysis.



BIOLOGICAL ACTIVITY

Description	Pamatolol is a cardioselective beta-adrenoceptor antagonist without sympathomimetic activity.
In Vivo	Pamatolol is well absorbed in the gastro-intestinal tract and excreted in the urine of man, dogs, rats and mice after oral administration, mainly in unchanged form, within 24 hrs ^[1] . MCE has not independently confirmed the accuracy of these methods. They are for reference only.

PROTOCOL

Animal Administration ^[1]	Three male Sprague-Dawley rats weighing 200-250 g are given pamatolol-sulphate dissolved in water at a dose of 50 mg/kg (10 µCi/mg) by means of a stomach tube. The rats are housed in metabolic cages that allows for separate collection of urine and feces for a 24 hr period. They are given a commercial pellet diet and drinking water ad libitum. MCE has not independently confirmed the accuracy of these methods. They are for reference only.
--------------------------------------	---

REFERENCES

[1]. Hoffmann KJ, et al. Species differences in the metabolism of pamatolol, a cardioselective beta--adrenoceptor antagonist. Eur J Drug Metab Pharmacokinet. 1979;4(3):163-73.

Caution: Product has not been fully validated for medical applications. For research use only.

Tel: 609-228-6898

Fax: 609-228-5909

E-mail: tech@MedChemExpress.com

Address: 1 Deer Park Dr, Suite Q, Monmouth Junction, NJ 08852, USA