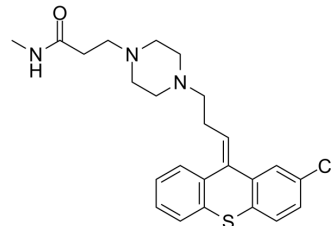


## Clothixamide

|                    |   |
|--------------------|---|
| Cat. No.:          | HY-U00021   |
| CAS No.:           | 4177-58-6   |
| Molecular Formula: | C <sub>24</sub> H <sub>28</sub> ClN <sub>3</sub> OS                                       |
| Molecular Weight:  | 442.02  |
| Target:            | Others  |
| Pathway:           | Others  |
| Storage:           | Please store the product under the recommended conditions in the Certificate of Analysis. |



### BIOLOGICAL ACTIVITY

#### Description

Clothixamide is a thiazide derivative. It is used to treat psychiatric disorders.

**Caution: Product has not been fully validated for medical applications. For research use only.**

Tel: 609-228-6898

Fax: 609-228-5909

E-mail: tech@MedChemExpress.com

Address: 1 Deer Park Dr, Suite Q, Monmouth Junction, NJ 08852, USA