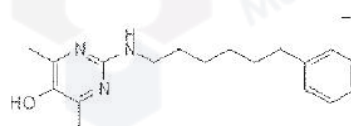
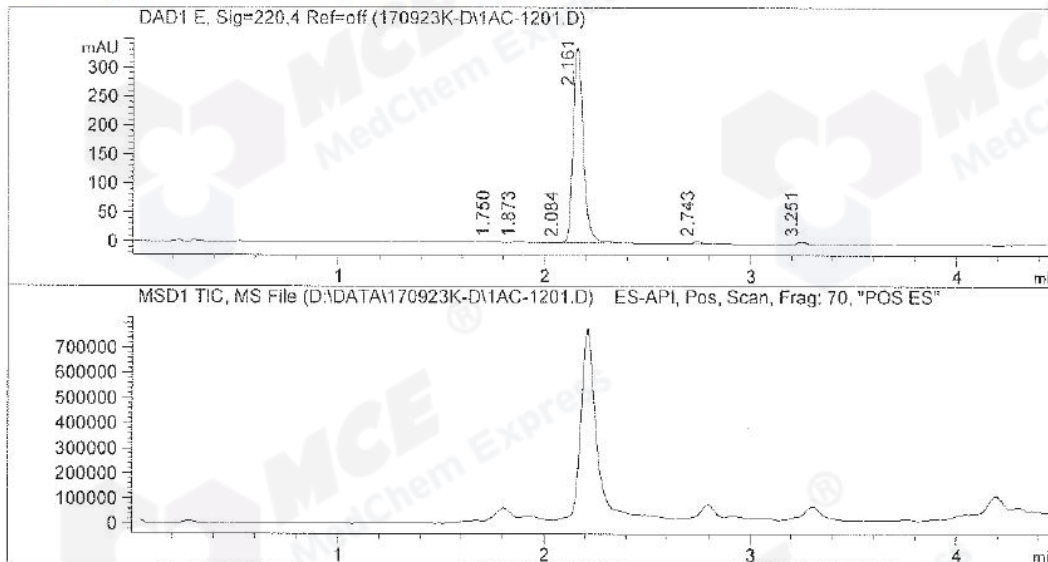


LCMS REPORT

Compound ID : 107361-33-1
 Sample ID : ET9130-572-P1A
 Injection Date : 23. Sep. 2017
 Inj. Vol. : 0.7 ul
 Location : P1-A-03
 Acq Method : D:\DATA\170923K-D\WUXIAB25.M
 Data Filename : D:\DATA\170923K-D\1AC-1201.D
 Instrument : K
 Catalog No : HY-U00024 Batch#26499



Chemical Formula: C₁₃H₂₀N₂O
 Exact Mass: 299.20



Integration Result

Signal 1 : DAD1 E, Sig=220,4 Ref=off

Peak #	RT [min]	Area	Height	Height %	Width [min]	Area %
1	1.750	4.211	1.392	0.397	0.050	0.360
2	1.873	3.799	1.140	0.325	0.056	0.325
3	2.084	2.402	0.799	0.228	0.050	0.205
4	2.161	1137.813	340.106	96.915	0.056	97.256
5	2.743	9.077	3.305	0.942	0.046	0.776
6	3.251	12.611	4.190	1.194	0.050	1.078

Confidential. For research only NOT for regulatory filing

