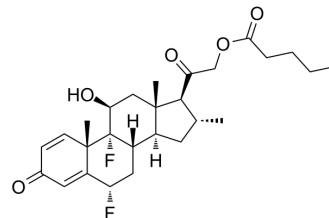


Diflucortolone valerate

Cat. No.:	HY-U00058		
CAS No.:	59198-70-8		
Molecular Formula:	C ₂₇ H ₃₆ F ₂ O ₅		
Molecular Weight:	478.57		
Target:	Fungal; Bacterial		
Pathway:	Anti-infection		
Storage:	Powder	-20°C	3 years
		4°C	2 years
	In solvent	-80°C	6 months
		-20°C	1 month



SOLVENT & SOLUBILITY

In Vitro	DMSO : 100 mg/mL (208.96 mM; Need ultrasonic)				
		Solvent Concentration	Mass 1 mg	5 mg	10 mg
	Preparing Stock Solutions	1 mM	2.0896 mL	10.4478 mL	20.8956 mL
		5 mM	0.4179 mL	2.0896 mL	4.1791 mL
10 mM		0.2090 mL	1.0448 mL	2.0896 mL	
Please refer to the solubility information to select the appropriate solvent.					
In Vivo	1. Add each solvent one by one: 10% DMSO >> 90% corn oil Solubility: ≥ 2.5 mg/mL (5.22 mM); Clear solution				

BIOLOGICAL ACTIVITY

Description	Diflucortolone valerate is a powerful corticosteroid used topically for the research of various skin diseases ^[1] .
In Vitro	Diflucortolone valerate is a potent corticosteroid esterified with valeric acid. Diflucortolone valerate helps reduce swelling, itching, and redness ^[1] . MCE has not independently confirmed the accuracy of these methods. They are for reference only.
In Vivo	DL ₅₀ values are virtually non-toxic after single oral administration (mouse greater than 4 g/kg, rat ca. 3.1 g/kg, dog greater than 1 g/kg). Given s.c. (LD ₅₀ mouse ca. 180 mg/kg, rat ca. 13 mg/kg) and i.p. (LD ₅₀ mouse ca. 450 mg/kg, rat ca. 98 mg/kg) it is highly active and therefore produces also toxic effects ^[2] . MCE has not independently confirmed the accuracy of these methods. They are for reference only.

REFERENCES

[1]. B M Henz, et al. Double-blind, Multicentre Analysis of the Efficacy of Borage Oil in Patients With Atopic Eczema. Br J Dermatol. 1999 Apr;140(4):685-8.

[2]. V P Günzel, et al. [Toxicological Examination of Pure Diflucortolone Valerate and Its Formulations as Ointment, Fatty Ointment and Cream in Animal Experiments (Author's Transl)]. Arzneimittelforschung. 1976;26(7b):1476-9.

Caution: Product has not been fully validated for medical applications. For research use only.

Tel: 609-228-6898

Fax: 609-228-5909

E-mail: tech@MedChemExpress.com

Address: 1 Deer Park Dr, Suite Q, Monmouth Junction, NJ 08852, USA