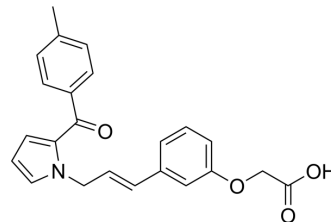


Pyrrole-derivative1

Cat. No.:	HY-U00059
CAS No.:	474006-30-9
Molecular Formula:	C ₂₃ H ₂₁ NO ₄
Molecular Weight:	375.42
Target:	Others
Pathway:	Others
Storage:	Please store the product under the recommended conditions in the Certificate of Analysis.



BIOLOGICAL ACTIVITY

Description

Pyrrole-derivative1 is extracted from patent WO/2002/085851A1, example 2, developed for the treatment of diabetic disease.

REFERENCES

[1]. HY-U00059

Caution: Product has not been fully validated for medical applications. For research use only.

Tel: 609-228-6898

Fax: 609-228-5909

E-mail: tech@MedChemExpress.com

Address: 1 Deer Park Dr, Suite Q, Monmouth Junction, NJ 08852, USA