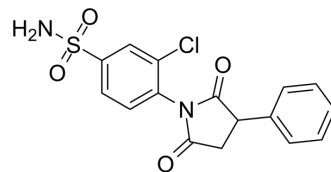


## Suclofenide

Cat. No.:	HY-U00102
CAS No.:	30279-49-3
Molecular Formula:	C <sub>16</sub> H <sub>13</sub> ClN <sub>2</sub> O <sub>4</sub> S
Molecular Weight:	364.8
Target:	Others
Pathway:	Others
Storage:	Please store the product under the recommended conditions in the Certificate of Analysis.



### BIOLOGICAL ACTIVITY

Description	Suclofenide (Neosulfalepsine;PB385) is an anticonvulsant agent.
-------------	---

### REFERENCES

[1]. Mikes F, et al. 3-Chloro-4-(phenylsuccinimido)-benzenesulfonamide (GS 385), a new anticonvulsant: its quantitative determination, pharmacokinetics and metabolism using high performance liquid chromatography. *Arzneimittelforschung*. 1979;29(10):1583-8.

**Caution: Product has not been fully validated for medical applications. For research use only.**

Tel: 609-228-6898

Fax: 609-228-5909

E-mail: tech@MedChemExpress.com

Address: 1 Deer Park Dr, Suite Q, Monmouth Junction, NJ 08852, USA